

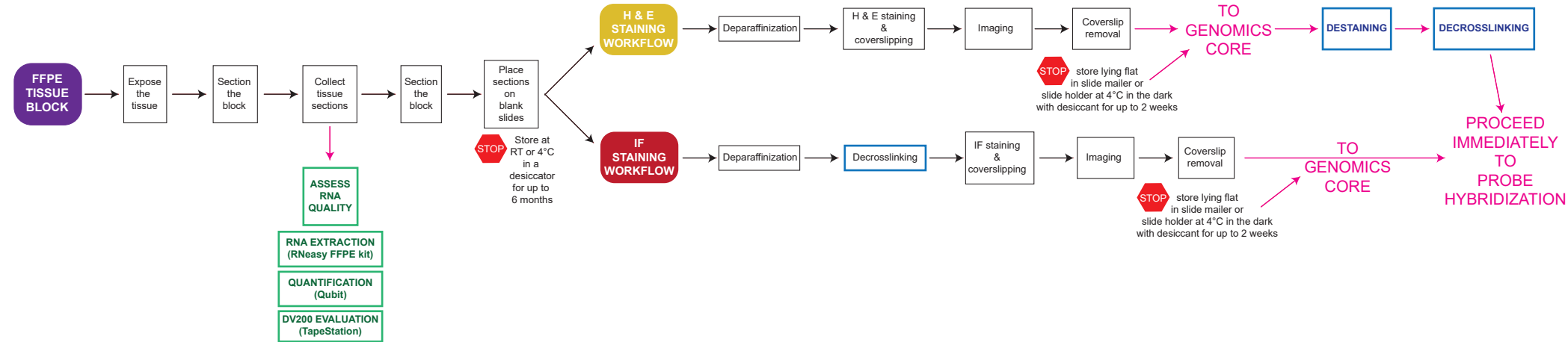
Visium HD (FFPE) H&E or IF staining workflows

HISTOLOGY/TISSUE PREPARATION COMPONENT

Performed by the EPC Histology and Molecular Pathology Laboratories or Winship Cancer Tissue and Pathology Shared Resource (CTPSR)

Visium HD FFPE Tissue Preparation Handbook (CG000684)

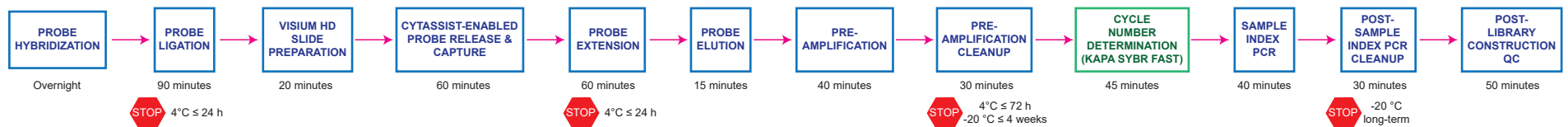
Performed by the Genomics Core



GENOMICS COMPONENT

Performed by the Genomics Core

Visium HD Spatial Gene Expression Reagent Kits User Guide (CG000685)



Legend



*Blue boxes = require 10x reagents

*Blue boxes + bold blue writing + pink arrows = performed by Genomics Core with 10x reagents

*Green boxes + bold green writing + pink arrows = performed by Genomics Core with Qiagen/Agilent/Roche reagents